

SPONSORED BY THE

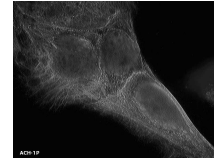
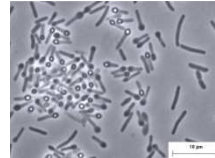
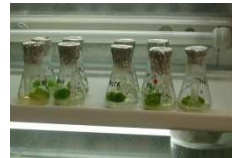
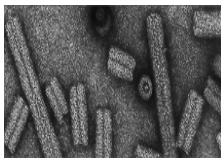


Federal Ministry
of Education
and Research



Experiences from the GBRCN Demonstration Project *with initial focus on microorganisms* *- Topic Governance -*

Dagmar Fritze, Joint Seminar GBRCN, Vienna, 29. - 30. 11. 2010



Existing Microbial Collection Networks



	Type	Advantage	Disadvantage
WFCC ECCO national networks	voluntary	<ul style="list-style-type: none">● quiet, but long life● umbrella for all● incubator for greater efforts● first step to get acquainted with CC / BRC life	<ul style="list-style-type: none">● no mandate● no manpower● fragmented efforts● dependent on individuals

Therefore we need a GBRCN



OECD: A **Strong, Science Based and User Orientated Infrastructure** is Necessary

- to develop collections into BRCs
- to network BRCs
- to bring them together with user communities
- to bring them together with regulatory bodies

to appropriately underpin

- bio-economical developments
- modern innovative research
- true global scientific - technical cooperation

and

- to help governments to fulfil their obligation with respect to global requirements such as biosecurity and ABS

Governance Components for the GBRCN



Participants: Countries or Economies

- conditions of participation laid down by a legally non binding MoU or other appropriate instrument

Governing Board: formed by country representatives (representatives of relevant international organisations invited)

- guides the work of the secretariat; mode of functioning laid down

Advisory Board(s): scientific, technical, ethical, legal; ad-hoc and standing as needed

- advising the Governing Board and the Secretariat

Central Secretariat: hosted by an institution in one of the participating countries

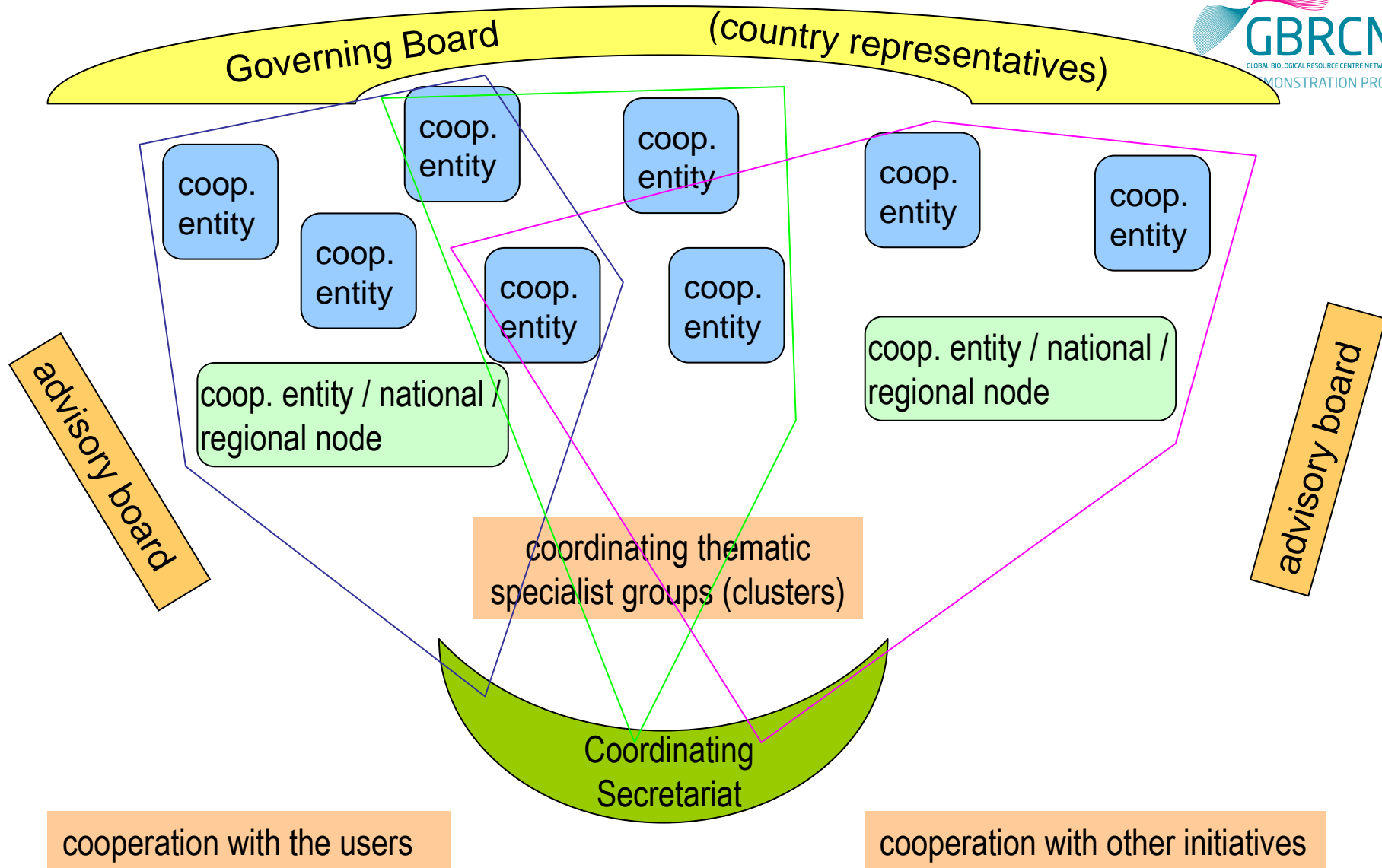
- host selection process, personnel, functions laid down
- responsible for coordinating day-to-day networking, responsible coordinators for specific areas, initiating cooperation and projects for, with and between Cooperating Entities, outreach and linkages

Cooperating Entities: ex-situ collections of laboratory held, living biological material; service CCs in their various stages towards the BRC status

- conditions of participation laid down in a Cooperation Agreement

Associated Parties: institutions with an interest in / to become BRCs and best practice implementation

Model Structure GBRCN



GBRCN will be governed by two instruments



Political Level:

Memorandum of Understanding - MoU



signed by Countries or Economies

Practical Level:

Cooperation Agreement - CoA



signed by Cooperating Entities (Collections of varying degree towards BRC status, Associated Parties)

Contents of Memorandum of Understanding

Paragraph 1	DEFINITIONS.....	2
Paragraph 2	UNDERSTANDINGS.....	4
Paragraph 3	OBJECTIVES.....	5
Paragraph 4	THE GOVERNING BOARD.....	7
Paragraph 5	THE GBRCN SECRETARIAT HOST	9
Paragraph 6	THE GBRCN SECRETARIAT.....	10
Paragraph 7	MANAGING DIRECTOR/ EXECUTIVE SECRETARY.....	11
Paragraph 8	INTELLECTUAL PROPERTY.....	12
Paragraph 9	FINANCE.....	13
Paragraph 10	ASSOCIATION AND DISASSOCIATION OF PARTICIPANTS.....	14
Paragraph 11	OTHER MATTERS.....	15
Annex I	FINANCIAL CONTRIBUTIONS FOR VOTING PARTICIPANTS.....	16
Annexe II	COOPERATION AGREEMENT.....	17
Annexe III	REQUEST FOR PROPOSAL TO HOST SECRETARIAT.....	18



Contents of Cooperation Agreement

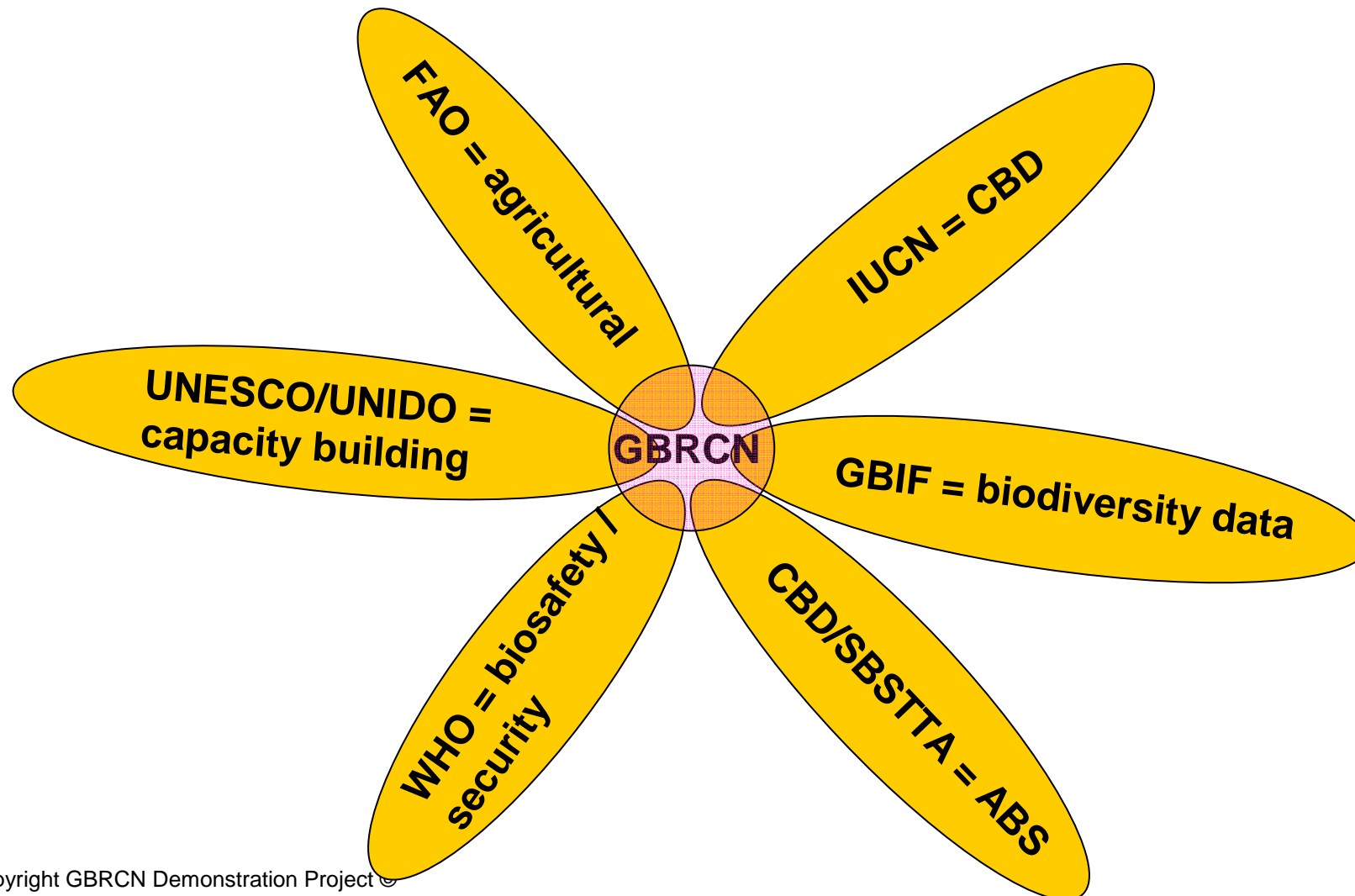


This document will be an agreement between the actors on the ‘practical’ level (Collections / BRCs / Interested Parties) and the GBRCN; describing such issues as:

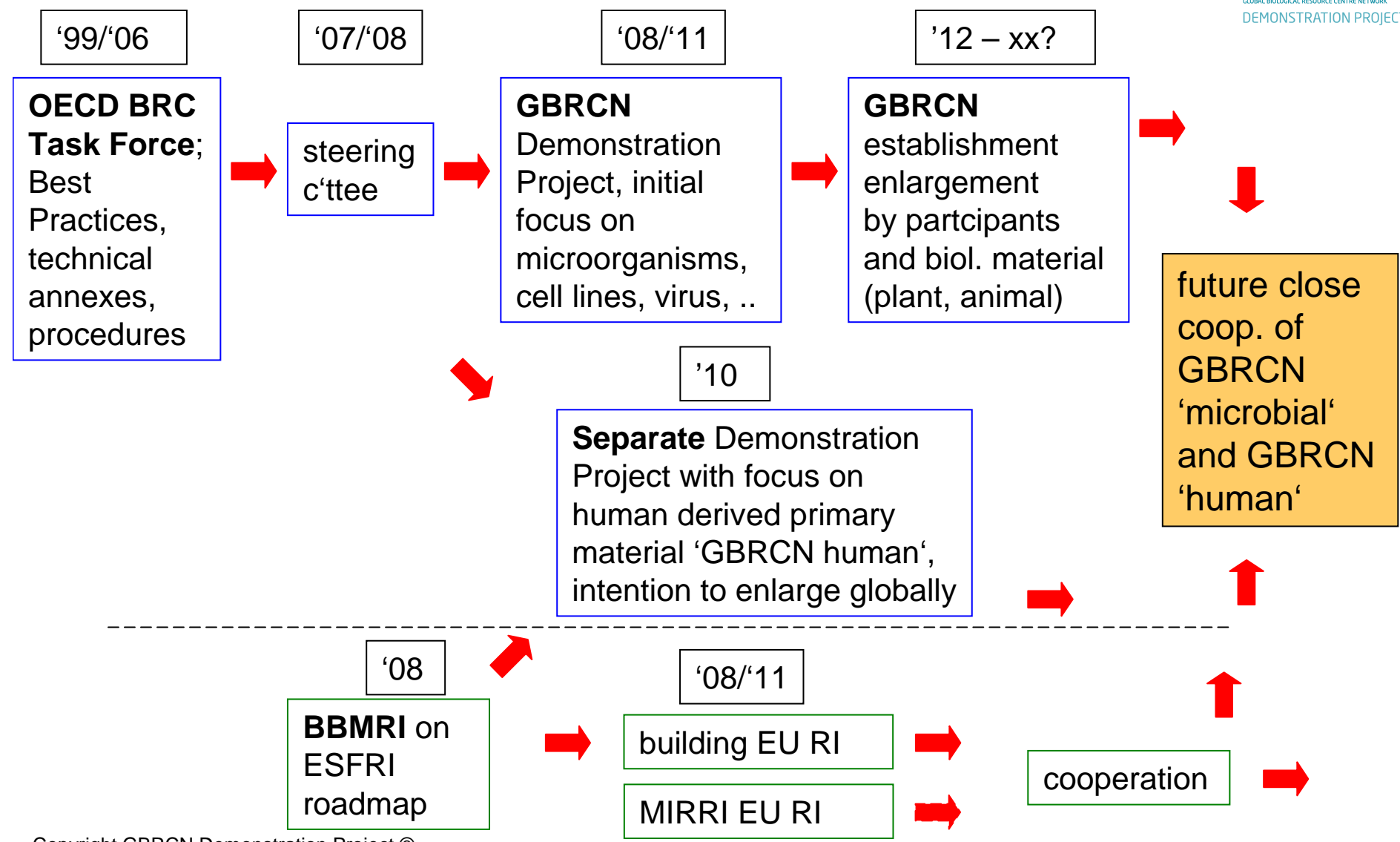
- establishment of joining and leaving procedures
- cooperation requirements
- mechanisms to be adopted to facilitate sharing materials, data and expertise
- co-ordination and focus of key activities
- mechanisms to be adopted for best practice implementation (BPI)
- mechanisms to be adopted for documentation of reached status of BPI

Outreach, Contacts

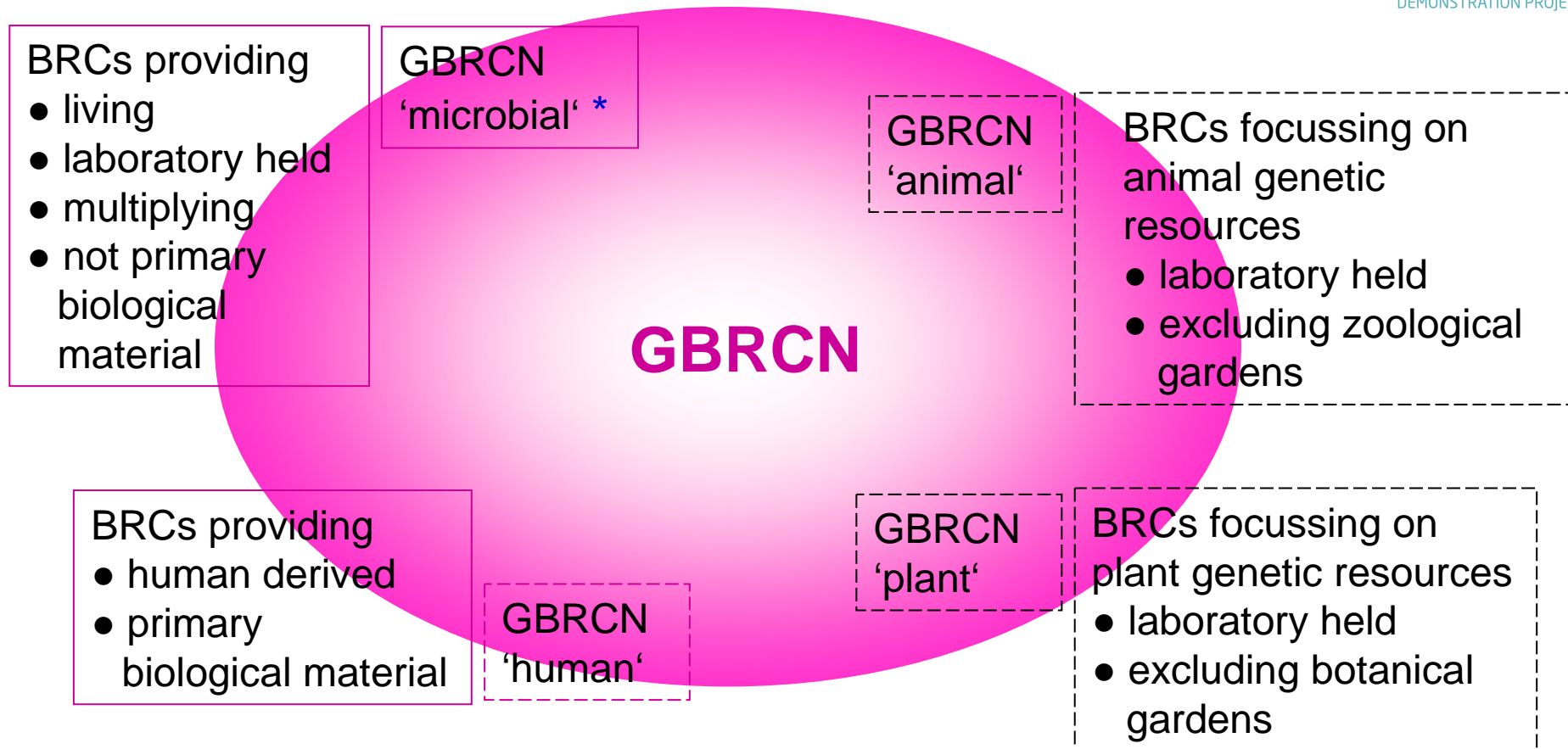
Some Existing Intergovernmental Organisations have a strong Thematics Overlap with GBRCN



Development Status of GBRCN - Demonstration Project for *Microorganism Domain* and the *Human Derived Material Domain*



GBRCN – a Coordinated Structure of Expert Hubs



* definition microbial = bacteria, archaea, fungi ,yeasts, plant-animal- bacterial virus, plant- animal- human cell cultures

Europe / ESFRI: Complementarity of Initiatives

EMBRC

marine biodiversity; 'blue' biotechnology; across animal and plant domains; endangered species, climate, ecosystems

BSL3/4-ERINHA

severe disease causing organisms; across animal and microorganism domains; technical facilities

BBMRI

human derived, primary material; 'red' biotechnology; focussed on one species; disease and population orientated; ethics with a view to human beings

MIRRI

living, laboratory held, biological material; 'green, white, grey' biotechnology; archaea, bacteria, fungi, yeasts, viruses, cultured cells of animal, human, plant origin; biodiversity, research and application; CBD-ABS, biosafety, -security, -risk, emphasis RG1 + 2

non-european partners explicitly invited



MAKERERE
UNIVERSITY



CCFC

THANK YOU !



ICLC



C'EST LES MICROBES QUI AURONT LE DERNIER MOT !